



Heritage Drive  
Chisholm NSW 2322  
Subscribe: <https://sbccchisholm.schoolzineplus.com/subscribe>

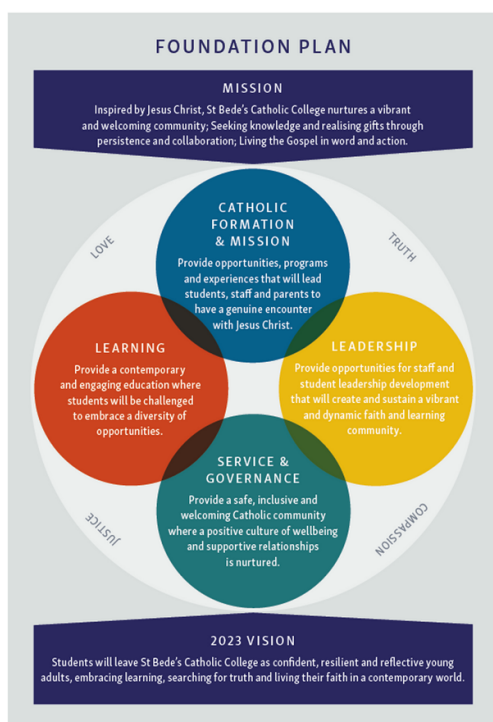
Email: [admin@chisholmsb.catholic.edu.au](mailto:admin@chisholmsb.catholic.edu.au)  
Phone: 02 4088 8222



27 October 2017

## PRINCIPALS MESSAGE:

Welcome to our new formatted newsletter. As our newsletter is our main form of communication, I encourage you to read all of its contents. You will note that the newsletter has now been organised into themes according to our Foundation Plan. Within the Foundation Plan, we have our Mission which is a statement about who we are at St Bede's and a 2023 vision. This is what we are striving to achieve when our incoming students leave at the end of their schooling in 2023. The four domains to enable us to achieve both our mission and vision are the four areas in the coloured circles.



## LEARNING DOMAIN

### STAFF NEWS:

In continuing the recruitment of an outstanding St Bede's staff, it is with much excitement that I can announce the appointment of two more highly qualified, experienced and talented teachers who will commence at the start of next year.

- Sarah Hopkins:** Sarah is in a current leadership role at St Philip's Christian College Cessnock and has been appointed as a Personal Development/Health/PE (PDHPE) and Mathematics teacher. In placing a high degree of importance on sport and positive well-being, it was important that we recruited a high quality, passionate Physical Education teacher, as well as an excellent Mathematics teacher. Despite the unusual combination PDHPE and Mathematics, we were inundated with high quality applicants. Sarah with her experience and drive is an outstanding appointment and we welcome her to St Bede's.
- Michelle Burgess:** Michelle is the current CAPA Coordinator at St Peter's Maitland and is regarded in the Maitland/Newcastle Diocese as one of the best music teachers and an outstanding subject coordinator. Amongst her many noted achievements as both a performer and teacher, Michelle is best known as a key organiser of the Maitland Newcastle Catholic Schools Music showcase, 'Diosounds'. In our high hopes of quickly developing a reputation for creativity and performance, Michelle's appointment is great news for the College and we welcome her to our community.

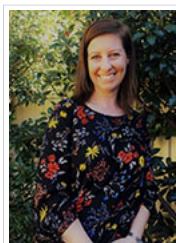
The names, positions and starting date of the St Bede's staff to date are:

- **Principal:** John Murphy - commenced at start of 2017
- **Assistant Principal:** Brett Donohoe - commenced on 9 October 2017
- **Student Coordinator:** Jasmine Hutchinson - commenced on 9 October 2017
- **Learning Support Coordinator:** Amy Butler - commenced on 9 October 2017
- **Religious Studies Coordinator:** Fiona Duque - will commence start of 2018
- **English/HSIE/CAPA/Languages Coordinator:** Andrew Cornwell - will commence start of 2018
- **Maths/Science/PDHPE/TAS Coordinator:** Tamara Borkowski - will commence start of 2018
- **Senior Clerical Officer:** Rachel Quirk commenced at start of 2017
- **Finance Officer:** Leah Finlay - commenced on 9 October 2017
- **College Counsellor/Psychologist:** Thibaut Huens - will commence start of 2018
- **Science/Mathematics Teacher:** Liane Buckley – will commence start of 2018
- **Personal Development/Health/PDHPE and Mathematics Teacher:** Sarah Hopkins– will commence start of 2018.
- **Music Teacher:** Michelle Burgess: - will commence start of 2018.

This week's staff profile is on one of our highly talented and dynamic Studies Coordinators Tamara Borkowski. Tamara will oversee the subject areas of Science, Mathematics, Personal Development/Health/PDHPE, and Technology & Applied Studies (TAS). Despite remaining in Sydney until the end of the year in her full-time position, Tamara has already done some outstanding work.

### Qualified to teach the following courses:

Religion  
Technology and Applied  
Studies (TAS)  
Vocational Education &  
Training – (VET) Hospitality.



*Tamara Borkowski*

### Teaching experience:

I am currently employed at De La Salle Revesby in Sydney. My 15+ years of teaching experience includes teaching Stage 4 & 5 Religion, VET Hospitality at the HSC level as well as being a HSC Exam Judge Marker, Stage 5 Food Technology and Stage 4 Technology Mandatory. This encompasses the Gifted and Talented Student

Program (Newman stream), Language Background other than English and students with additional needs. As part of my role in the TAS faculty I have been heavily involved with programming (UBD), Project Based Learning, Gifted and Talented education, and literacy research and resource creation. I have also conducted action research projects into how to teach writing skills to students and have also developed programs for Sydney Catholic Schools that were implemented across all participating schools. I hold a Mini-Certificate in Gifted and Talented Education from the University of New South Wales in conjunction with the numerous additional qualification requirements needed to deliver VET Hospitality.

### Family background:

My family history can be traced all the way back to the first fleet, whereas my husband's family are of Polish descent and hence the Borkowski surname.

### Personal Interests/Passions:

I have a passion for outdoor activities. My family and I enjoy riding motorbikes, water-skiing and running.

### My hopes and dreams in coming to St Bede's:

I look forward to being part of the new Catholic community and having this opportunity to really get to know the students of St Bede's.

### Advice to the incoming Foundation Students:

High school is a new (and sometimes scary) environment. You have new teachers and new peers but the best bit of advice I can give is to focus on enjoying the change, make the most of everything offered to you and remember your teachers are always here to help.

## 2018 Transition

Our Student Coordinator, Jasmine Hutchinson and Learning Support Coordinator, Amy Butler have made contact with all of the Primary schools that our incoming Year 7 students are coming from. They have transition visits planned over the next two weeks and are excited to meet with the students' Year 6 teachers to learn more about our incoming Year 7 cohort. Planning is also well underway for our final Orientation day which will be held on Tuesday, 14th November. This will be another fantastic opportunity to get to know our students.

## LEARNING DOMAIN

St Bede's is committed to building a culture of enquiry which fosters continual improvement in teaching and learning. Staff have already been busy building capacity through ongoing professional learning to ensure the students at St Bede's receive the very best contemporary and engaging Catholic education.

## Ideas Exchange

On Monday 16 October, John Murphy and Brett Donohoe visited St Luke's, Marsden Park to meet with the staff from St Luke's and Santa Sophia Catholic College, Box Hill. These schools, like St Bede's, open their doors to Year 7 students in 2018. Staff from Bede Polding, Windsor, an established co-educational school that intends to reimagine the curriculum from 2019 onwards were also present.

The day was a great success as ideas were exchanged and possibilities for a reimagined Year 7 Curriculum. St Luke's staff hosted a guided tour of their primary school. It was wonderful to see the contemporary learning spaces in full operation. Both John and Brett received very affirming comments by all schools on the detail of our Foundation Plan and the hopes and aspirations for St Bede's.

All school leaders agreed it was a very productive day and will meet again later in the term to discuss their progress.



## Team St Bede's Planning Day

Who could believe that on Monday 23 October, just days after the appointment of Michelle Burgess and Sarah Hopkins, we would have the entire team at the CSO collaborating, sharing ideas and beginning our planning! The day was met with positive contributions by all and an abundance of energy and enthusiasm. Carmel Tapley, the CSO education officer for secondary curriculum, was also present on the day in support. It was very reassuring to feel a real sense of shared understanding in what constitutes quality teaching and learning.

The future of St Bede's is in very good hands with the appointment of a passionate, committed and high quality teaching staff.

## St Bede's Backpacks

St Bede's backpacks are now available for purchase from our office at 39 Heritage Drive, Chisholm. The backpacks are a mandatory item and may be purchased for \$80.00 each. They have a 15-year warranty, Internal 'S'; shaped spinal rod, hard

wearing, moulded EVA hard base, easy sponge clean material and 1.2kg in weight are some of the features.



## NEWLY ENROLED STUDENT INTRODUCTIONS



Emily Beamish is one of the dynamic duo twins coming to us from Thornton Public School. Emily likes the look of St Bede's because of the sense of community we are creating and the emphasis that will be placed on contemporary and engaging learning. Emily is a kind and responsible young lady who is keen to make new

friends and to make the most of the opportunities that will be presented to her at our school. She enjoys playing outside and dance. We welcome Emily and look forward to her contributing to and thriving at St Bede's.

Makaila Beamish is the other half of the dynamic duo twin team from Thornton Public School. Makaila is a hard-working, diligent student who appreciates the importance of getting a quality education. Well-liked by her peers and teachers, Makaila not only wants to get the best possible education but also to find out more about our Catholic faith. She enjoys reading and art. She is looking forward to being part of a foundation team in creating an inclusive and welcoming school community. We welcome Makaila and look forward to her becoming an important member of St Bede's.



Levi McBride is another one of the many students coming to us from Thornton Public School. Levi has a great love of sport and is the current Vice-Captain at his school. He loves Rugby League and wisely supports South Sydney. He hopes to be an important member of a St Bede's Rugby league Team. Levi enjoys learning and in particular enjoys assisting in the library. With a great passion for digital learning and understanding the importance of learning hubs in schools, Levi will not only be a key person in the sporting program at St Bede's, but also will be an asset in the promotion of learning. We look forward to having Levi at our school and we welcome him and his family.



Bailey Krupka will be joining St Bede's from Grahamstown Public School and is hoping to move into the area. Bailey is a current prefect, with only two other boys at his school having this level of leadership status. Bailey loves sport and is a fast runner and will no doubt enjoy competing against other schools in hopefully representing St Bede's. Bailey is also a very confident speaker and is looking forward to again representing the College, this time in public speaking and debating. He hopes to excel at St Bede's in all areas and to fully utilise his many talents.



## LEADERSHIP DOMAIN

### ST BEDE'S: A CASE STUDY IN PROGRESS

In response to a request from the Australian Catholic Secondary School Principals Association, I wrote an article for their circulation on the journey so far on the progress of our school. Within this report, I highlighted some of the challenges of being a Foundation Principal, including how to build a new school community and the development of a Foundation Plan for St Bede's. With St Bede's being the first Catholic Secondary School to open in the Maitland Newcastle Diocese for over 40 years, it was important that I shared how we as a community are writing the history of the College from day one.

This report can be found under the news and articles tab on our website, as well as by clicking on this link:

<http://www.chisholmsb.catholic.edu.au/news-events/news-stories-galleries/2017/st-bedes-a-case-study-in-progress/>



### CATHOLIC SCHOOLS OFFICE VISIT ST BEDE'S

On Monday 23 October, two bus-loads of staff from the Maitland/Newcastle Catholic Schools Office (CSO) visited our school. With such a huge investment going into improving schools and opening St Bede's next year and another school in Medowie opening in 2020 and with such a high level of interest, a school visitation day was planned for a significant percentage of their staff. First stop was St Bede's, followed by St Aloysius, which is located next door.

Included in their visit was a tour of our building site, an address by our architect Elizabeth Brown and a short thank you from myself to the CSO staff who have worked so hard beyond

the scenes in helping to make St Bede's a reality. As part of ensuring St Bede's will be a place of welcome, we look forward to welcoming staff back from the CSO at different times in the future.



### Positive Education

St Bede's staff were fortunate to be visited by Emma South, Positive Education coordinator at San Clemente Mayfield, last week. Emma has worked in collaboration with staff to ensure wellbeing for the San Clemente community. In line with the Learning Domain from our Foundation Plan, newly appointed staff at St Bede's have begun collaborating with Diocesan schools to assist in the creation our own model of wellbeing for students and staff specific to the St Bede's community. Emma's wealth of knowledge on wellbeing and the passion for her role is contagious. We are now even more excited about prioritising the implementation of strategies to promote wellbeing for students and staff and what this will look like in the St Bede's context.



## SERVICE & GOVERNANCE DOMAIN

---

### UPCOMING EVENTS:

- **Student Orientation Day:** Tuesday 14 November at Pat Hughes Hall, Thornton. Buses departing from St Aloysius and Our lady of Lourdes at 9.00am with all non-feeder school students meeting at 8.30am at 39 Heritage Drive Chisholm.
- **Parent Information Session:** Thursday 23 November from 9.30 – 11.00am or 6.30 – 8.00pm at Beresfield Bowling Club - "Rainbow Room" - Anderson Drive, Beresfield.
- **Community Social:** Tuesday 12 December from 5.00 – 7.30pm at St Aloysius, Heritage Drive Chisholm – next to St Bede's.